

The Gn15 Tome

Issue 2

The Creative Scale

January 2007

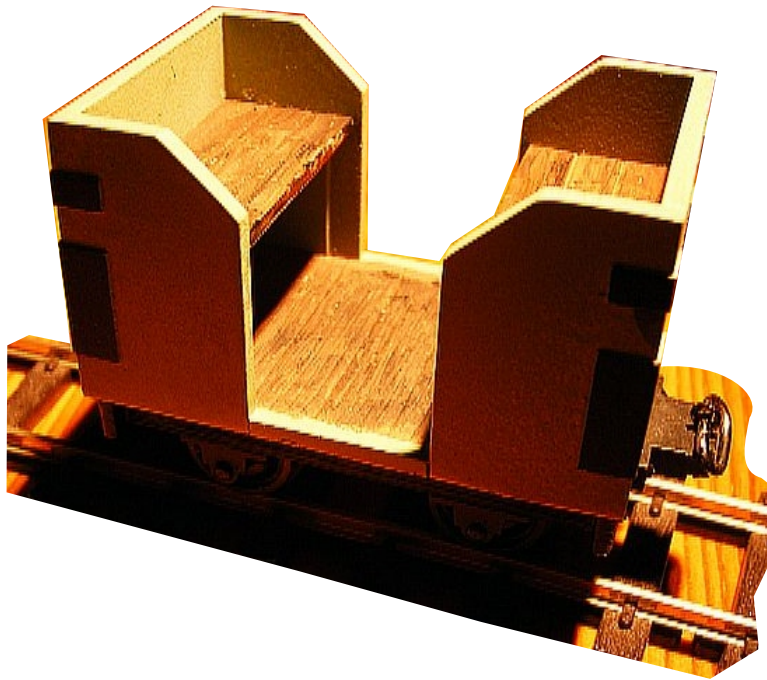


photo
courtesy Gerry Bullock

Inside this issue

Beginners Guide to resin kits

print of carton

Tiny Passenger coach

Watercress loco print

Editorial

This is a reconstruction of the second issue which was originally published as a web page and so did not exist as a PDF

I was lucky enough to find a couple of printed pages today December 29th 2007. So this is as much as I am able to reconstruct from the original web pages which were accidentally lost during an archiving exercise.

The editorial was only a couple of lines welcoming the forum members to the new Tome which was started by George Himms.

Ed.

A Tiny French Coach Model

By Gerry Bullock



Photo Credit http://perso.orange.fr/cf-chanteraines/images/gif/sf2_1.jpg

My model is based upon the French Carriage (shown in the photo above) from the Chemin de Fer des Chanteraines, a tourist line some 6kms from Paris. The prototype has seats for 4 persons, my model could seat 3 but I've restricted the load to one seated and one standing plus the guard on the Rear platform.



The prototype track has a gauge of 600 mm, i.e. nominally 2 feet, whilst my track is Peco 16.5 mm representing a 15" gauge. Not exact BUT there is no commercially available 15mm track.

My model is built in Gn15, which is becoming increasingly popular: Construction is of Plasticard with pewter sideframes and brass handrails.

The prototype dimensions are Overall length 7'6" Width 4'3", Wheelbase 44". The Height is 7' 8" which significant bearing in mind that this carriage is designed to run on Peco OO scale track.



There is a significant amount of lead between the axles hidden by the sideframe, which enables 6" radius curves to be negotiated without derailment.

The pewter sideframes and axles are proprietary items everything else was constructed from readily available modelling materials.

The two passengers are hand painted whilst the Guard is a commercially painted item from a Garden Railway source.

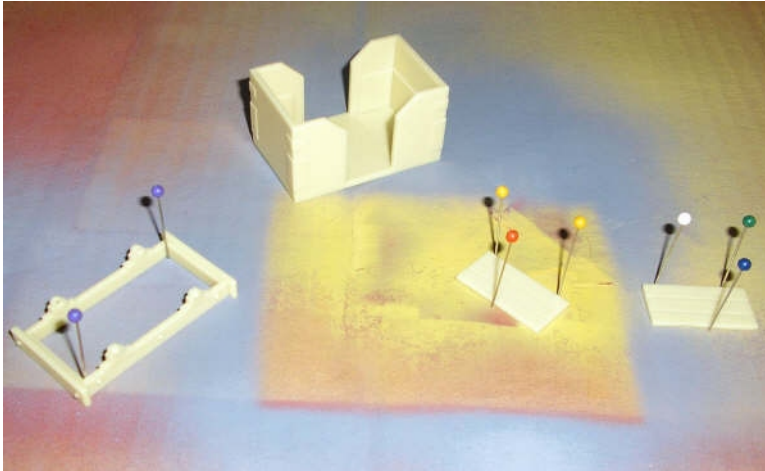


Beginners Guide to Resin Kits

The Beginner's Guide To Resin Kits

Most Gn15 Rolling Stock Kits from Sidelines consist of two major parts the chassis and the wagon body albeit the Covered Van has a total of 10 components for the body alone.

This build is of the workmans' coach. There are just 4 major parts to this build so not too difficult.



Most kit manufacturers recommend washing all pieces in warm water before starting the build. I normally ignore this, of that more later. However it's probably better to clean any flash from components before washing. I add a small drop of Flash to the warm water then rinse items in cold water. Make sure that everything is completely dry before painting. It's surprising how drops lurk in the odd corner.

I use Car Acrylic Aerosols for all my undercoating and the first photo shows the Coach parts in my spray booth. Just a cardboard box with one end cut away and top surface cut back to allow better access with the spraycan. Pins are there to prevent small components being blown away by the spray. Bluetac works equally well but remember that you might need to move a part to spray tuther side. Alternatively you can mount small items on cocktail sticks or larger ones on a piece of dowel held up with a small bottle.

I use all three common primers - grey, white and red oxide depending on the finish coat colour.

I also follow up with the finish coat (if an Acrylic Body Colour) within minutes of the primer application. I'll leave it around half an hour if I'm going to hand paint with Gaming Acrylics. I know most would probably leave a spray coat overnight to dry BUT I've never bothered and generally don't have problems.



This is where I return to not washing the castings. If I intend to heavily rust/weather the wagon I spray the parts as received, odd results can occur. I should say rarely with Sidelines castings. As far as I'm concerned it doesn't matter as the subsequent weathering will make use of the poor paint adhesion where it occurs.

Second photo shows the coach with finish Peugeot Green applied. Only masking was floor area where Gaming Acrylics will be used to paint the wood planks.

You'll not that the coupler pockets are not fitted to the chassis at this stage. I prefer to paint chassis upside down, i.e. no paint on surface to be glued which means that the top surface of coupling would also be unpainted if already fitted. I merely scrape away paint from buffer beam before using CA to fix the coupler pockets. I paint these afterwards using Gaming Acrylics. Don't forget to drill the coupler pin holes before fitting couplers to Chassis, you might break the adhesive bond if you wait until fitted.

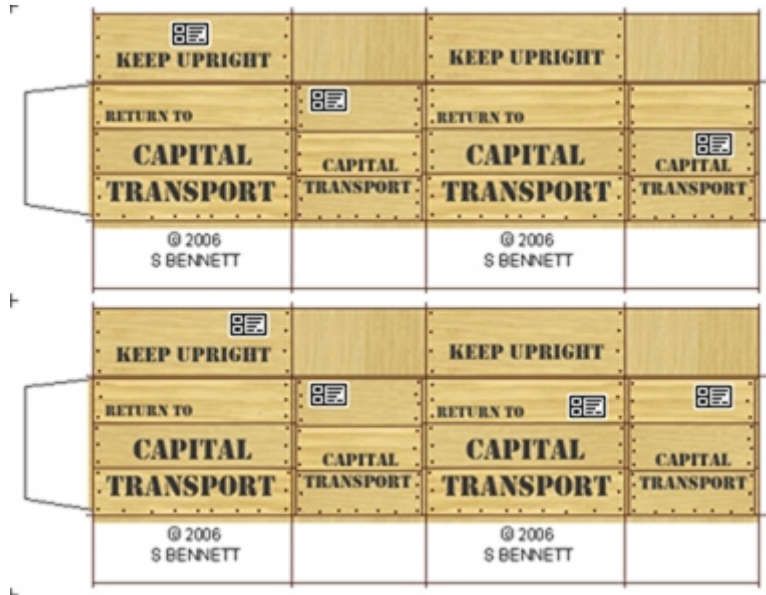
Final photo shows completed coach complete with passengers. You'll note that the coach floor is almost impossible to see with the passengers. CA adhesive was used for all joints, I started with the thick versions as the grab time isn't instantaneous BUT now use the thin version usually applied using a pin. Make sure you have a sharp scalpel handy as you're bound to stick fingers - better than a 4 hour wait at Casualty (VBG)

The black reinforcements are hand painted, again using Gaming Acrylics; paint is applied with a pointed brush that has barely half a dozen hairs at tip. Anyone who hasn't yet dabbled with resin kits or any kit/scratchbuild for that matter will find that the time to build is quite short. I know some scratchbuilds take forever as the components need to be designed and crafted rather than taken out of the box! The point is that the finishing takes the time - painting and weathering, rush it and you'll have a bodge on your hands (don't ask).

There are self proclaimed Bodgers on Gmatterbox come and take a look.

Gerry Bullock

The Prints Page



Some more cartons
courtesy Steve bennett



This months feature Locomotive

This months feature is a fold up of the little watercress loco.

Drawn by Michael Mott

